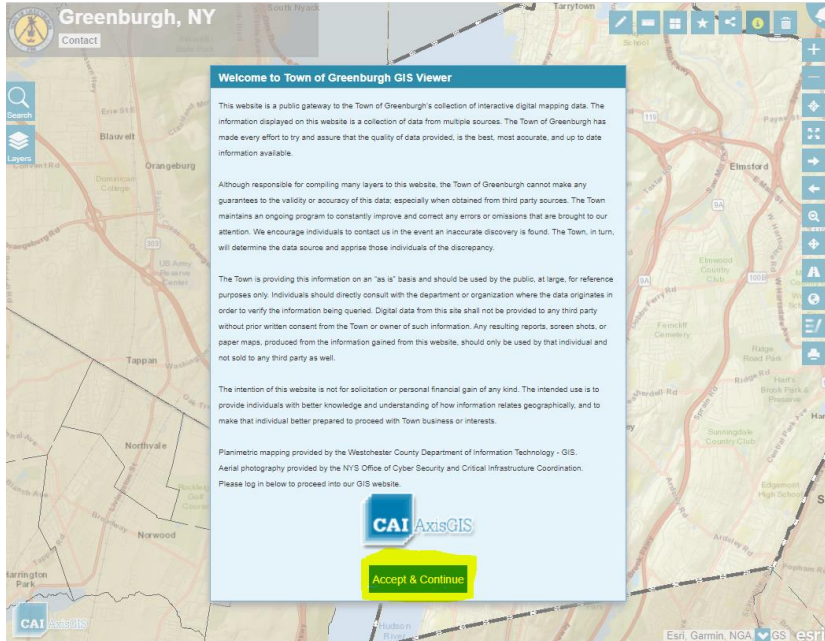


Instructions on how to see if the Assessor's office has a survey

Go to: <https://www.axisgis.com/greenburghny/>

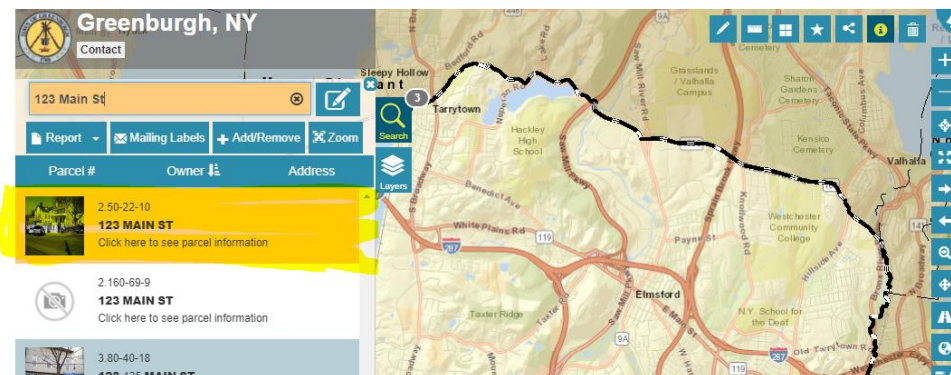
Accept the Terms and Conditions



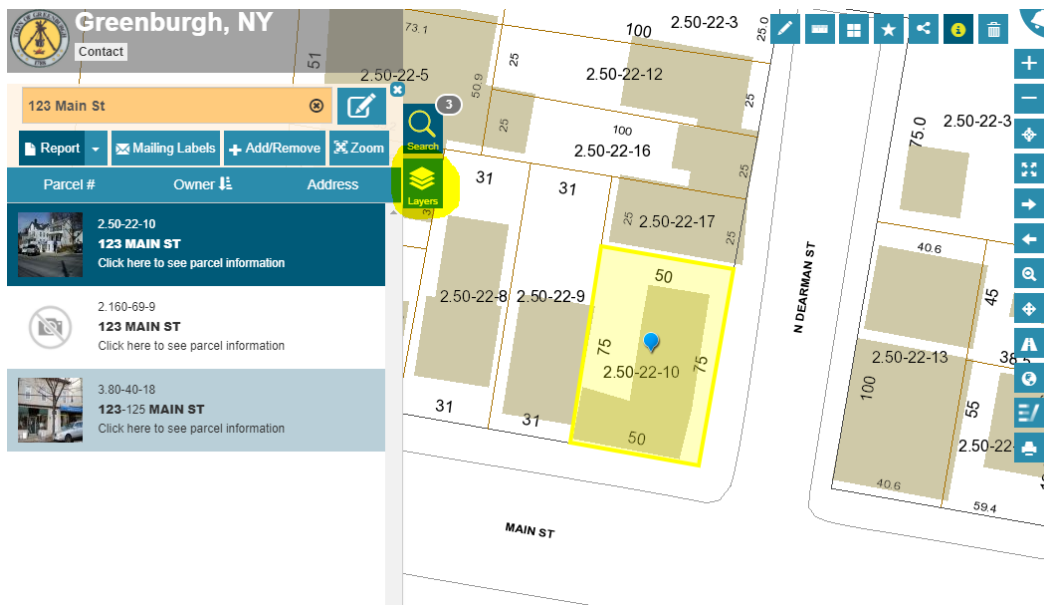
Click the "Search" button



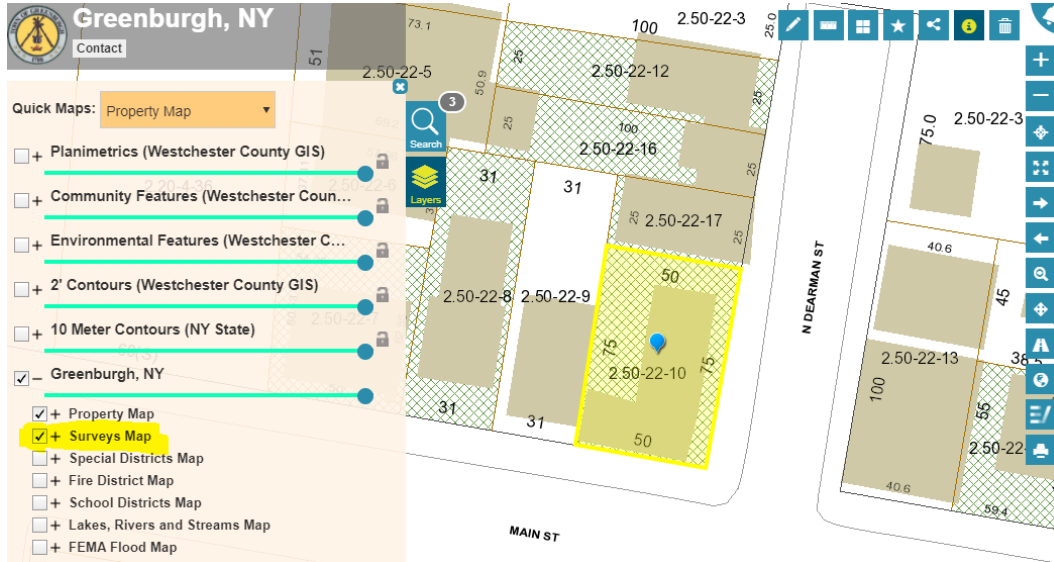
Enter the address and click on the description



After selecting the property you want, the map will zoom into that property. Now select the “Layers” tab.



Once you select “Layers” you will see the “Surveys Map” layer. Place a check inside box next to the layer. All the properties that have surveys will highlight with a cross hatch.



Now that you can see if the assessor’s office has a survey, you can contact us to request the survey.

Contact: 914-989-1520 or Assessor@greenburghny.com (if you email the request, and multiple surveys are needed, a screenshot will work better).